



PRECISION AGRICULTURE TECHNOLOGY
PLANTER CONTROL AND MONITORING SYSTEMS



agromaster[®]
TECHNOLOGY

“We know the soil”

www.agromaster.com

GNSS BASED AUTOMATIC GUIDANCE SYSTEMS

Our automatic guidance systems are built to make farmers' field operations more accurate, efficient, cost-effective and easier. Our automatic guidance system is suitable for hundreds of tractor models and is useful for all types of field operations. In addition to providing the highest accuracy, it also saves on fieldwork costs.



RTK L2 RECEIVER

RTK L2 GNSS receiver; It works as a standalone GNSS antenna that can receive RTK signal from both the private base station and local NTRIP providers such as FLEPOS, SAPOS, MoveRTK, etc., improving GPS accuracy.

MDU-G4

MDU-G4 mechanical control unit is a high performance steering actuator designed for high precision steering.

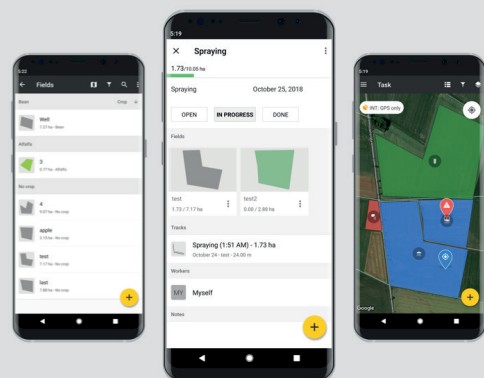


ECU-S1 CONTROLLER

The ECU-S1 controller is a high precision electronic control unit. Our automatic guidance system receives A-B line information and sends commands to the vehicle steering wheel, providing ± 2 cm accuracy along the A-B line.

ANDROID APP

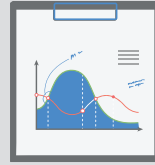
FieldBee automatic steering system; is a free Android application created for record keeping, mapping, tractor routing and customers' needs.





Mapping

Create and manage field boundaries by importing, drawing, or navigating with a GNSS receiver.



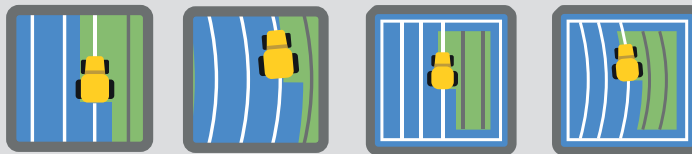
Record Keeping

It records equipment used, areas covered and hours worked. These work in sync with the web application, which allows automatically generated reports.



Recently Used Patterns

Operations performed in the previously studied area can be easily selected and reused.



Patterns

It offers the opportunity to create different types of patterns. A-B straight, A-B curved, Headland straight and curved





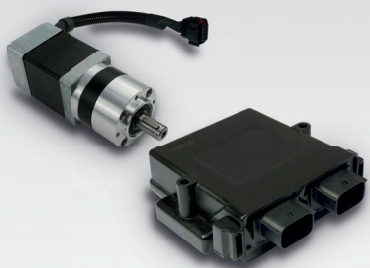
ESD / SEED DRIVER

ESD (Electronic Seed Driver) drives the seed drills via motors. ESD eliminates all mechanical seed drill transmissions. ESD is a simple and modular system for precision seed drills. The ESD System automatically manages the closing of rows. This saves seeds and interfaces with GPS devices (ISOBUS) for variable rate planting.

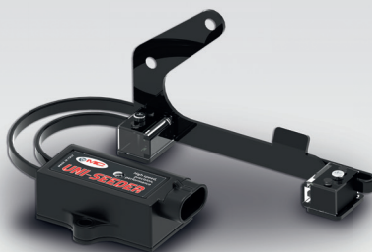
ADVANTAGES

- It provides sensitive and equal sowing.
- Provides variable rate sowing thanks to recipe maps.
- Allows the planting distance to be changed directly from the tractor cabin.
- Reduces uptime and maintenance costs.
- It provides efficiency and economic performance.
- Provides more safety for the operator thanks to fewer moving parts.
- Allowed/per hour speed of the machine can be up to 18 Km.
- Complies with ISOBUS 11783 using universal terminals.
- Ergonomic design
- Easy to use

“We know the soil”



ESD MODULE



UNI-SEEDER PHOTOCELL



ECU BRIDGE ISOBUS



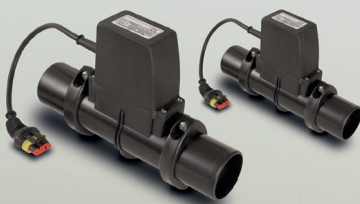


DORADO SERIES - MX

DORADO MX is specially designed for Pneumatic Precision Planting. It is an innovative modular system that makes it possible to monitor and control the seed drill. The system can easily manage the row closing process via special valves directly on the touch screen.

FEATURES

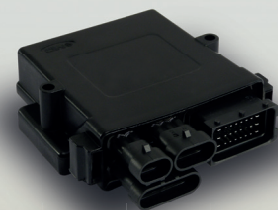
- Checking the planting distance and seed population for each row (max. 48 rows)
- Data is displayed in both numerical and histogram format.
- Acoustic and visual alarms.
- Hectare counter
- 3.5" or 7" graphic touch screen.
- Programmable fan speed with alarm, RPM.
- Vacuum monitoring.



VALVES



UNI-SEEDER PHOTOCCELL



ECU CONTROLLER



DORADO SERIES - 12000 NG

The Dorado 12000 NG monitor allows you to control the operation of the machine in real time by displaying the average seed distance and seed population for the machine and each row.

It is possible to combine the monitor with a flow meter to monitor the amount of liquid herbicide. The Dorado 12000 NG has a "night" mode with colorful graphics designed to make it easy to use in low light.

FEATURES

- Supports pneumatic precision seed drills up to 12 rows.
- Provides all the basic information about planting via the color graphic display.
- Instantly notifies planting abnormalities thanks to the integrated ring bell.





HIGH PRECISION with Technology



Product visuals may differ from reality, Our company is not responsible for typographical errors.



Büyükkayacak Mahallesi Org. San. Bölgesi Evrenköy Cad. No:32
Selçuklu/Konya/TÜRKİYE

444 33 66 / +90 332 233 54 72

satis@ates.com.tr

www.ates.com.tr

